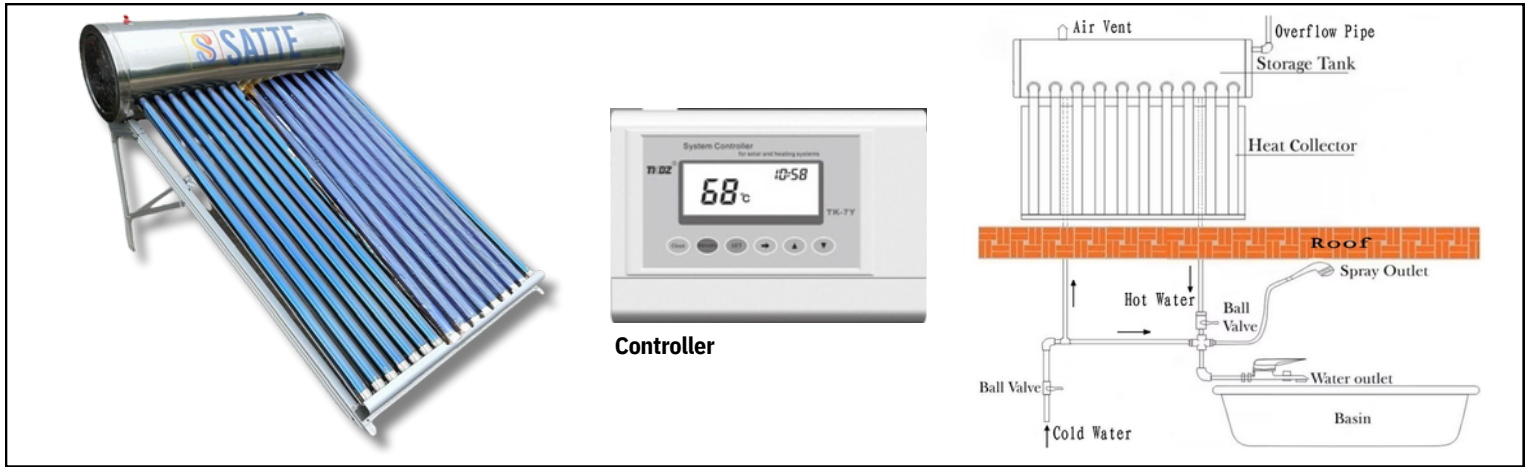


SCTT Solar Water Heater



Typical Applications

- Residential Use: Supplies hot water for daily household activities such as bathing and washing.
- Commercial Buildings: Supports water heating for offices, hotels, and apartment complexes.
- Industrial Settings: Provides hot water for cleaning, processing, or other industrial requirements.
- Schools and Universities: Ensures sufficient hot water for dormitories and cafeterias.
- Healthcare Facilities: Delivers hot water for sanitation and hygiene in hospitals and clinics.
- Rural Areas: An eco-friendly solution for off-grid water heating in remote regions.
- Swimming Pools: Maintains desired water temperature for swimming pools in colder climates.
- Restaurants and Cafeterias: Provides hot water for cooking, dishwashing, and cleaning purposes.
- Agriculture: Supports dairy farms, livestock care, and crop processing with heated water.
- Hotels and Resorts: Ensures a comfortable guest experience with consistent hot water availability.
- Gym and Wellness Centers: Supplies hot water for showers and spa facilities.
- Emergency Shelters: Offers sustainable hot water solutions for disaster relief operations.

SCTT Parts & Specification

- Inner Storage Tank: Food-grade stainless steel 0.4MM
- Tank Exterior Shell: High-quality white coated color steel 0.4MM
- Heat Insulation: High-density polyurethane foam with 72~80 hours heat preservation
- Vacuum Tube: Borosilicate glass 3.3, AL/AL-ALN or Cu-SS-ALN/AIN coating
- Bracket: Hot-dip galvanized steel 1.5MM, universal bracket suitable for slope and flat roof installation
- Optional Devices: Auxiliary tank, Electrical heater, Intelligent controller, Anode magnesium bar
- Accessories: Stainless bolts & nuts, anti-aging silicon gasket, dustproof rubber seal, plastic air-vent cap
- Angle of bracket: **20°-50°**
- Hot water Output: **45°-95°C**
- Designed Pressure: **0.5 Bar**

Technical Data

Model	Solar Vacuum Tube		Effective area Aperture m ²	Water Tank Capacity/L	Total Capacity/L	Insulation mm
	Tube Qty	Size/mm				
SCTT 190	18	Φ58 / 1800	1.7	152.6	200.1	50
SCTT 374	36	Φ58 / 1800	3.39	299.1	394.1	50