

SM SMART WATER BOOSTING SYSTEM



Typical Applications

- Water Pressure Boosting - This pump is designed to work seamlessly with pressure sets, suitable for applications where increased water pressure is required
- Irrigation Systems - Agricultural applications, specifically irrigation systems, can benefit from the pump's ability to handle clean water with the presence of air.
- Commercial Buildings - The pump can be used in commercial buildings where there is a need for a reliable water supply and pressure.
- Industrial Use - Its capabilities make it suitable for certain industrial applications where clean water pumping is required.

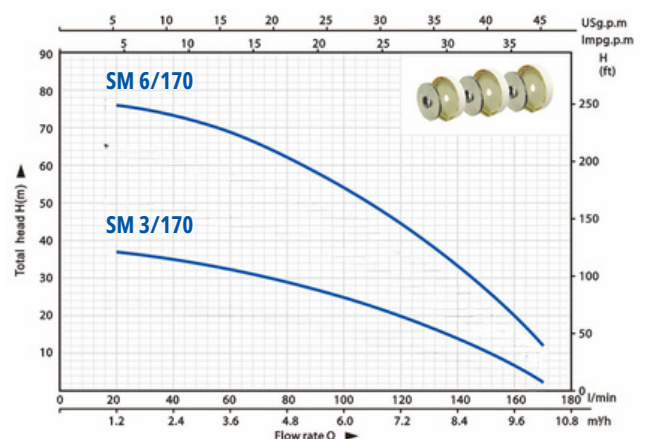
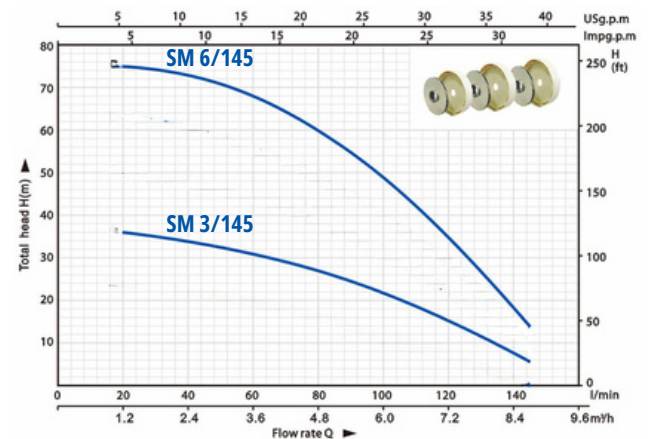
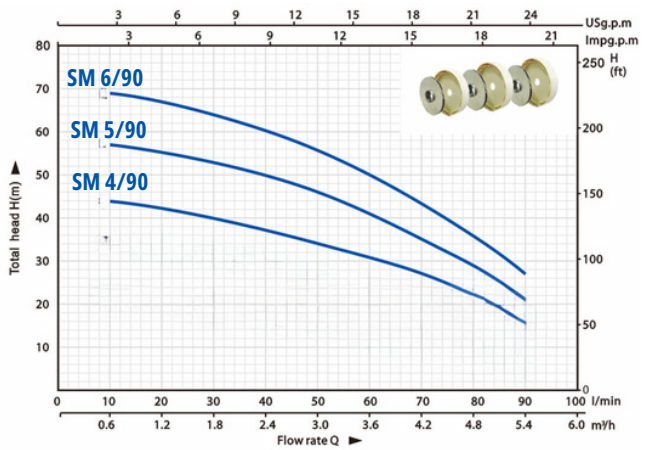
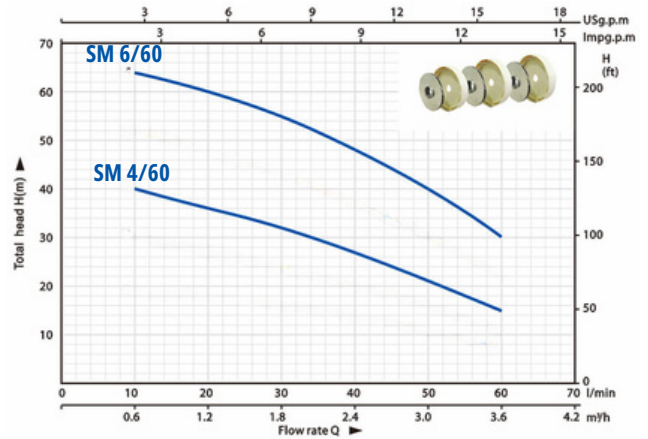
Operating Conditions

- **Max. Liquid Temperature:** +60°C
- **Ambient Temperature upto :** +40°C
- **Total suction lift up to:** 8m

Motor

- Two-pole induction motor(n=2850 r.p.m)
- Insulation Class B
- Thermal protector for single phase
- Single-phase 220V/50Hz, 60Hz if request
- Three-phase 380V/50Hz
- **Pump body:** Cast iron + Stainless steel
- **Pump support:** Cast iron
- **Motor housing:** Aluminum
- **Impeller:** AISI304 SS
- **Motor shaft:** AISI304 SS
- **Mechanical seal:** SIC/Graphite

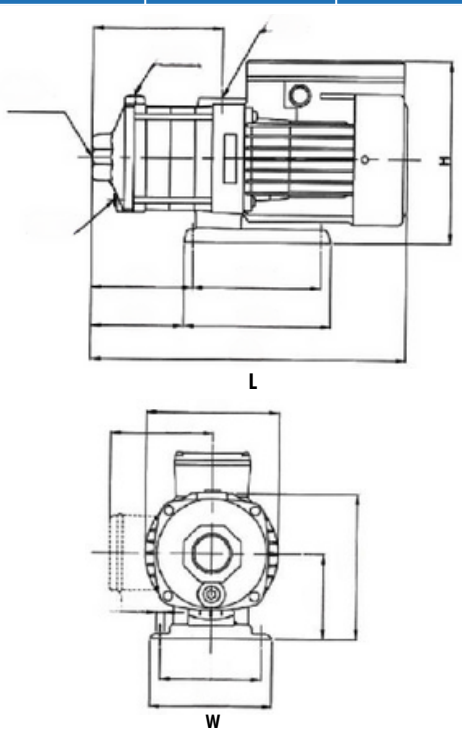
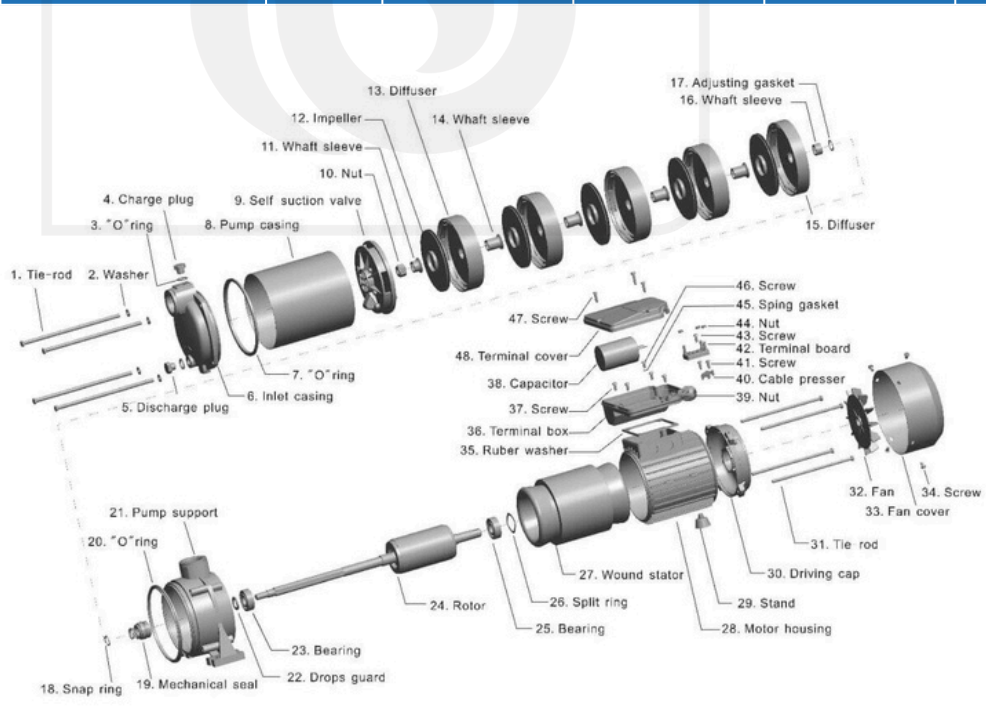
Performance Curve



SM SMART WATER BOOSTING SYSTEM

Technical Data

Model	Power		Inlet/Outlet (Inch)	Dimensions			Weight (kg)
	KW	HP		L	W	H	
SATTE SM 4/60	0.7	0.95	1"x1"	465	190	210	11.1
SATTE SM 6/60	1	1.3		515	190	210	13.1
SATTE SM 4/90	0.75	1		465	190	210	12.2
SATTE SM 5/90	1	1.3		490	190	210	13.3
SATTE SM 6/90	1.3	1.75		560	230	250	17.1
SATTE SM 3/145	0.75	1		1¼"x1¼"	440	190	210
SATTE SM 6/145	1.85	2.5	605		270	260	23.5
SATTE SM 3/170	1	1.3	440		190	210	13.1
SATTE SM 6/170	2.1	2.8	605		270	260	25



The pump should be installed in an enclosed environment, or at least sheltered from inclement weather.